

URBANISM

GUINEA CONAKRI - URBAN PROPOSAL I

100 HOUSES

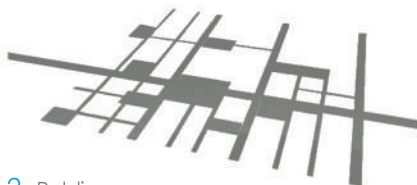
Urban project for a new city in Guinea Conakri. Houses for workers - and their families - of the new urban waste treatment factory. The project considers all the social facilities needed.



PROPOSAL ELEMENTS:



1. Roads



2. Public squares



3. Social facilities



4. Housing common areas

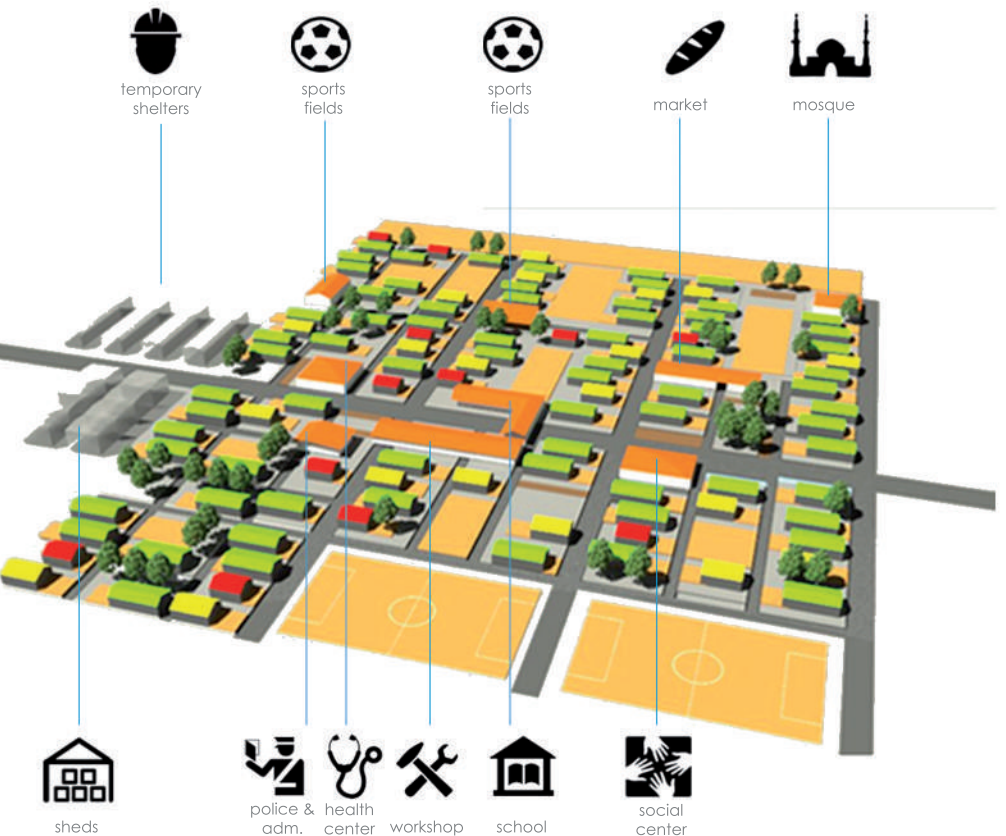


5. Housing private areas

The urban proposal wants to create common public areas throughout all the territory. The houses will be organized around these common areas. The urban design wants each house to have not only these public areas but also their own private exterior space.

The social facilities are distributed along the whole city.

In these proposals, each building presents a coloured roof. It will be the distinguishing feature to customize the houses according to the family colour tastes and preferences.

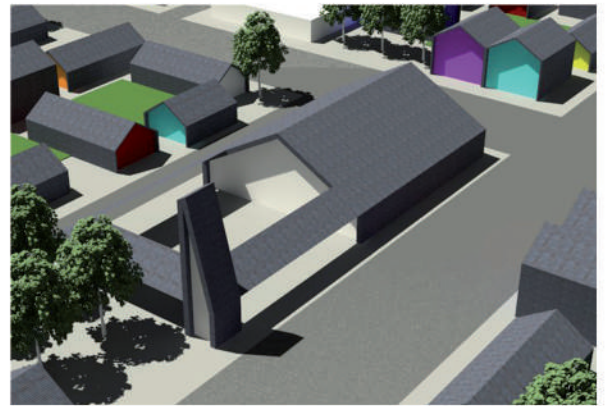


URBANISM

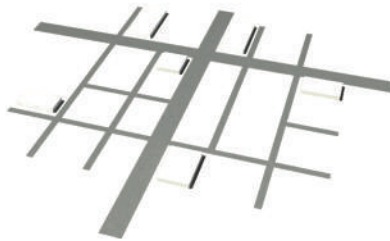
GUINEA CONAKRI - URBAN PROPOSAL II

100 HOUSES

Urban project for a new city in Guinea Conakri. Houses for workers - and their families - of the new urban waste treatment factory. The project considers all the social facilities needed.



PROPOSAL ELEMENTS:



1. Roads + public spaces



2. Common areas



3. Community model repetition



5. Customized colors + green areas

This urban proposal consist of a basic habitability core which is repeated all along the territory. These basic units change when a public space appears, adopting the best distribution according to the public building.

The social facilities are distributed along the whole city.

In these urban proposal, the facades have different colors. It will be the distinguishing feature to customize the houses according to the family colour tastes and preferences.



sheds



temporary shelters



health center



mosque



market



police & adm.



workshop



school



sports fields

COMPONENT DESCRIPTION SYSTEM GENERAL FEATURES

42m² HOUSE

FUNCTIONAL DISTRIBUTION:

1. Access porch
2. Living room - Dining room
3. Kitchen
4. Bathroom
5. Bedroom



50m² HOUSE

FUNCTIONAL DISTRIBUTION:

1. Access porch
2. Living room - dining room
3. Kitchen
4. Toilet
5. Main bedroom
6. Bathroom
7. Bedroom
8. Exterior laundry



64m² HOUSE

FUNCTIONAL DISTRIBUTION:

1. Bedroom
2. Bedroom
3. Kitchen
4. Dining room
5. Living room
6. Bathroom
7. Exterior laundry

